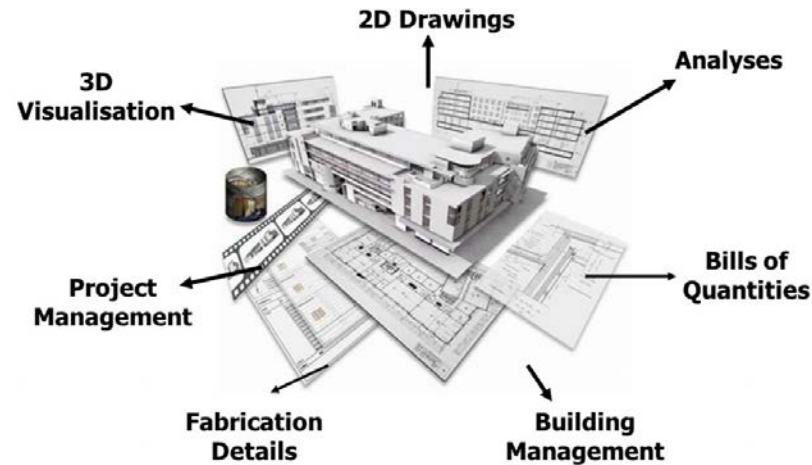


Current status and overview of BIM according to IFSE standard

HOST MILAN 20 – 24 October 2017

Roberto Assi BIM Representative FCSI EAME



FCSI EAME BIM SEMINAR HOST 2017 20 – 24 October 2017

Agenda

In the next 45 min. We are going to see the following point:

- **The History of the BIM standard for Foodservice Equipment**
- **The IFSE Standard**
- **The open BIM**
- **Practical part: Design a Kitchen with Revit**
- **File naming QF_**
- **The Speciality Equipment**
- **The LOD 100**
- **RECAP**
- **Q & A**

Where was we 2 years ago?



FCSI USA STANDARD

Published: **April 2011**

Creators: **NAFEM e FEDA**



UK STANDARD

Published: **April 2014**

Creators: **CEDA, CESA, FCSI UK e BRITISH ACADEMY**



AUSTRALIAN & NEW ZEALAND STANDARD

Published: **January 2012**

Creators: **REVIT USERS VOLUNTEERS**



DUTCH STANDARD

Published: **June 2014**

Creators: **REVIT USERS VOLUNTEERS**

The History of IFSE

- **HKI** Germany created with a considerable Taskforce in on MAY 15th 2015 the new Shared Parameter List for BIM in Excel (German / English) as a base for the Foodservice Industry

A	B	C	D	E	F
GUID	Englisch	Deutsch			
	Speciality Equipment	Sonderausstattung	Verwendung	Type Of Parameter	Unit
	Default Elevation	Referenzhöhe	mandatory	Number	mm
	Assembly Code	Daugruppenkennzeichnung	mandatory	Number	
	Cost	Kosten	optional	Number	€
	Manufacturer	Hersteller	mandatory	Text	
	Model	Gerätebezeichnung	mandatory	Text	
	Type Comments	Gerätebeschreibung des Herstellers	optional	Text	
	URL	Internetadresse	optional	Text	
	Food Service Equipment, Identification Data	Großküchengeräte, Identifikation	Verwendung	Type Of Parameter	Unit
	Type Mark	Projektbezogene Typennummer	optional	Text	
	Item Number	Positionsnummer	optional	Text	
	Description	Beschreibung	optional	Text	
	Model Number	Artikelnummer des Herstellers	optional	Text	
	Remarks	Bemerkungen	optional	Text	
	Identify Quantity as Lot	Menge als Set	optional	Yes/No	
	URL Manufacturer	Internetadresse Gerätehersteller	optional	Text	
	URL Cutsheet	Internetadresse für die Maßzeichnung	optional	Text	
	URL Recommended Spares List	Internetadresse für Ersatzteilliste	optional	Text	
	URL Critical Spares List	Internetadresse für kritische Ersatzteilliste	optional	Text	
	Foodservice Equipment Identifier	Großküchengerätezuordnung	optional	Yes/No	
	NAFEM Spec ID No	NAFEM Zulassungs ID Nummer	optional	Text	
	Furnished By	Fachhändler	optional	Text	
	Installed by	Installateur	optional	Text	
	Revision Code	Revisionsnummer	optional	Text	
	Specification by Manufacturer	Beschreibung durch Hersteller analog	optional	Text	
	Specification by User	Leistungsverzeichniskurztex	optional	Text	
	MasterSpec	Beschreibung durch Hersteller analog	optional	Text	
	Omniclass Number and Title	Leistungsverzeichnislangtext	mandatory	Text	
	CSI MasterFormat	Omniclass Nummer und Bezeichnung	optional	Text	
		Klassifizierung im Projekt	optional	Text	
	SMACNA No	Sheet Metal and Air Conditioning Contractors	optional	Text	
		Spezifische Nummer in USA			
	Seismic Rating	Seismische Klassifizierung	optional	Text	
	Weight	Gerätgewicht (netto)	mandatory	Weight	kg
	Serial Number	Seriennummer	mandatory	Text	
	Length	Länge (Gerätebreite)	mandatory	Length	mm
	Depth	Tiefe	mandatory	Length	mm
	Height	Höhe	mandatory	Length	mm
	Approval URL	Kennzeichnung URL	optional	Text	
	Status	Zustand	Verwendung	Type Of Parameter	Unit
	Status	Zustand	optional	Text	



BIM Technical Committee



BIM PARAMETERS GROUP



The Standard

IFSE PARAMETER LIST + DATA DICTIONARY



Where we start from

The Americas



FCSI REVIT Standards

The Revit Foodservice Equipment Standards document has been updated for 2015. All files and documents pertaining to the Revit Foodservice Equipment Standards can now be found here, and they are available for all members and non-members to access. Highlights include newly clarified standards for line subcategories, including their line styles, and a materials library file for family creation to allow for greater consistency. There is also a statement addressing the need to keep Revit Foodservice Equipment families within two versions of the current Revit release. Manufacturers are encouraged to not create families as wall based or face based as this can cause issues with linked files. These updates will aid in better quality families for all users.

2015 Revit Standards

FCSI Shared Parameters List (.pdf)

FCSI Shared Parameters List (.txt)

Revit Materials File

REVIT Forum

Central Repository for Foodservice Standards and Guidelines on WEB



BIM Standards

Useful Links

**Customer
Experience
Forum**

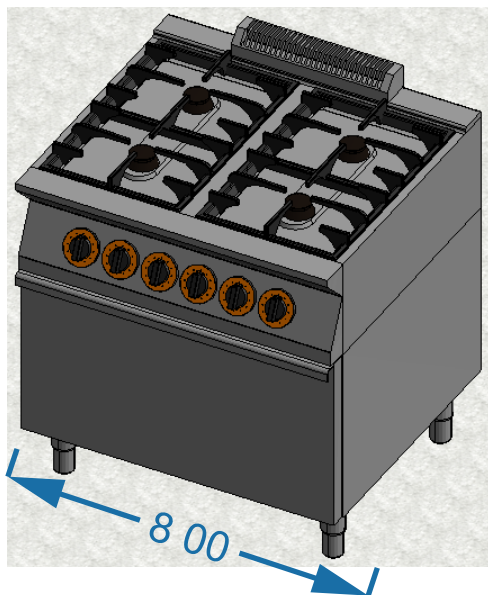
**Guidelines
for Models**

**BIM Workflow
Guidelines**

**IFSE
Parameter
List**

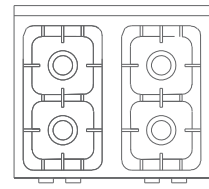


IFSE BIM DATA DICTIONARY



GUID

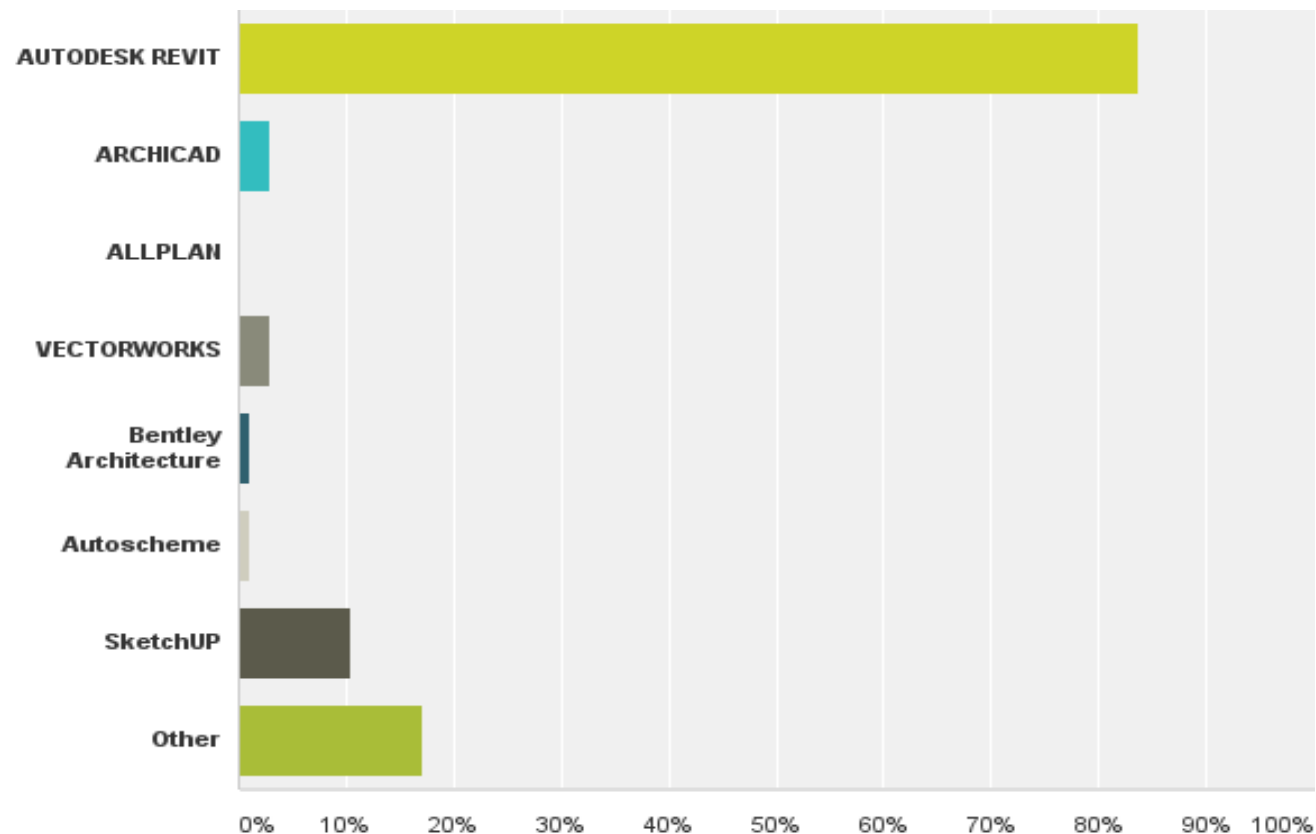
6246fb59-01f3-4eaa-b927-07a7ac632708 LENGHT/LÄNGE/LONGEUR...

ELEMENT	GUID	ENGLISH	GERMAN	FRENCH	OTHER
	7d1a2029-b6ac-49dc-9f51-eb3394632c9	GAS Kitchen range	GAS Kochherd	Feux vifs	XXXXXX

WHY REVIT

Q4: Which software do you use for the BIM process?

Answered: 105 Skipped: 38



IFSE BIM DATA DICTIONARY

	C	D	E	F	G	H	I	J	K	L
	REVIT GUID	IFC-GUID	GUI	English	Español	Português	Français	Deutsch	Italiano	DATA
1	442237e5-5158-439f-944b-b5465a71465b			Default Elevation	Altura referencial	Altura de referência	hauteur référentielle	Referenzhöhe	Altezza di riferimento	LENGTH
2	b9ee93fc-17ba-4775-a7c7-aa0a1bb0ec50			Assembly Code	Código del montaje	Código de assembly REVIT	marquage du module de construction	Baugruppenkennzeichnung	Codice di assemblaggio	TEXT
3	cb721ba7-229b-4715-a669-00786dd354ab			Cost	Gastos	Custo	coûts	Kosten	Prezzo	PRICE
4	31e85b5d-770f-4ad6-a30f-ad8dfb7aa8e			Description	Descripción	Descrição	Description	Beschreibung	Descrizione	TEXT
5	8833ac3d-1bce-4922-abd6-49c7d986b3bd			Keynote	Punto principal / keynote	Ponto principal / keynote	Point capital / keynote	Hauptpunkt / Keynote	Punto principale /keynote	TEXT
6	601dcf60-b886-4266-960b-2d68fb43ff71			Manufacturer	Fabricante	Fabricante	Fabricant / producteur	Hersteller	Fabbricante	TEXT
7	89362280-8bd6-47e8-945a-1dbb2c27114c			Model	Modelo	Modelo	Type	Gerätebezeichnung	Modello	TEXT
8	c6473671-1e4a-46a0-988b-c7ff1e1e08cb			Type Comments	Descripción del dispositivo por el fabricante	Descrição do tipo	Description du dispositif du fabricant	Gerätebeschreibung des Herstellers	Descrizione del tipo	TEXT
9	c7a90057-f7b1-4250-8aaa-af8abdc7984c			URL	página web	Endereço internet	adresse internet	Internetadresse	URL - Indirizzo web	URL
10	5d0e257f-db34-4ecd-afca-4e22a231dbeb			Accessory	Accesorios	Acessórios	Accessoires	Zubehör	Accessorio	YESNO
11	b8894649-27fb-4b92-9287-45b044e21d34			ID	ID	ID	ID	ID	ID	TEXT
12	2782a7d0-aacc-45b1-a1f8-9e1f9d702ee5			Item Number	Número de artículo	Código do artigo	Numéro d'Article	Artikel Nummer	Codice articolo	TEXT
13	cd7eaf51-45da-4406-9468-ba3b3823f2fc			Identify Quantity as Lot	Cantidad conjuntado	Quantidade por lote	Quantité par lot	Menge als Set	Identificare quantità come lotto	YESNO
14	36bafab-bfcd-4dfc-93f7-107f6d87434a			URL Critical Spares List	Dirección electrónica para repuestos críticos	Endereço internet da lista de peças sobressaler	URL liste pièces détachées cruciales	Internetadresse für kritische Ersatzteilliste	URL lista pezzi di ricambio critici	URL
15	db6d0402-1b47-477d-8e1a-fb1ee556531			URL Cutsheet	Dirección electrónica para el dibujo de dimension	Endereço internet da ficha técnica	URL catalogue	Internetadresse für die Maßzeichnung	URL catalogo	URL
16	2103fa79-a310-44a5-9a52-2a7308096a53			URL Manufacturer	Página web del fabricante	Endereço internet do fabricante	URL Fabricant	Internetadresse Gerätehersteller	URL Fabbricante	URL
17	21ece315-1637-4204-9f28-26d092da56ba			URL Recommended Spares List	Dirección electrónica para repuestos	Endereço internet da lista de peças sobressaler	URL liste pièces détachées recommandées	Internetadresse für Ersatzteilliste	URL lista pezzi di ricambio raccomandati	URL
18	f16fafa8-01d8-4b4e-bc72-7011ee21adf1			Foodservice Equipment Identifier	Asignación de los equipos de cocinas industriales	Identificador de equipamento de cozinha profiss	Identifiant Equipement	Großküchengerätezuordnung	Identificatore attrezzature	YESNO
19	2c8cb0ab-2c2e-4833-b57c-d0a0198d198f			NAFEM Spec ID Number	NAFEM código de admisión	Número de identificação NAFEM	Nombre d'identification NAFEM	NAFEM Zulassungs ID Nummer	Numero di identificazione NAFEM	TEXT
20	5a00e935-cd2b-411e-a2d5-6a1833f1399a			Furnished By	Especialista	Fornecido por	Fournis Par	Fachhändler	Fornito da	TEXT
21	ee417c6e-c1c8-4d3c-860a-58ae534be231			Installed By	Instalador	Instalado por	Installé Par	Installateur	Installato da	TEXT
22	ad25bcdf-61c6-4b68-9709-fd9a93295bc2			Revision Code	Número de revisión	Código de revisão	Code de Révision	Revisionsnummer	Codice di revisione	TEXT
23	3e5b6b70-9e18-4ce7-97fa-cb7c44cae5			Specification by Manufacturer	Especificación por el fabricante	Especificações do fabricante	Spécification du Fabricant	Beschreibung durch Hersteller analog Leistun	Specifiche del Fabbricante	TEXT
24	37884bb1-ebad-472a-a744-e377959f995b			Specification by User	Especificación por el usuario	Especificações do utilizador	Spécification de l'Utilisateur	Beschreibung durch Nutzer	Specifiche da parte dell'utilizzatore	TEXT
25	35819fdb-1f9e-43ed-934e-ae7ebe67468			Masterspec	Especificación	Especificações técnicas	Spécification technique	Beschreibung durch Hersteller analog Leistun	Specifiche da capitolato	TEXT
26	f5cd243c-0bc3-4974-bf31-3b9489814240			Omniclass Number and Title	número y nombre Omniclass	Número e título Omniclass	Omniclass numéro et nom	Omniclass Nummer und Bezeichnung	Omniclass numero e denominazione	TEXT
27	782a64e9-27bd-4d74-b441-ad4319034577			CSI MasterFormat	Clasificación en el proyecto	Classificação CSI MasterFormat	Classification dans le projet	Klassifizierung im Projekt	Classificazione nel progetto	TEXT
28	62d635b9-c295-4791-9560-ec3baa1471ca			SMACNA No	Sheet Metal and Air Conditioning Contractors núm	Número SMACNA	SMACNA No spécifique pour les matériaux Etats	SMACNA Nummer USA	SMACNA specifica per materiali USA	TEXT
29	7d1a2029-b6ac-49dc-9f51-eb3394632c94			Seismic Rating	Clasificación sísmica	Classificação sísmica	Classement sismique	Seismische Klassifizierung	Classificazione sismica	TEXT

IFSE BIM DATA DICTIONARY FORM FOR REQUEST'S



European Federation of
Catering Equipment Manufacturers



Foodservice Equipment BIM Parameters

supported by EFCEM and FCSI

Form for comments and proposed amendments.

Date:	Document: BIM PARAMETERS COMMENT FORM
	Your name:
	Your email:
	Return to: keith.warren@cesa.org.uk

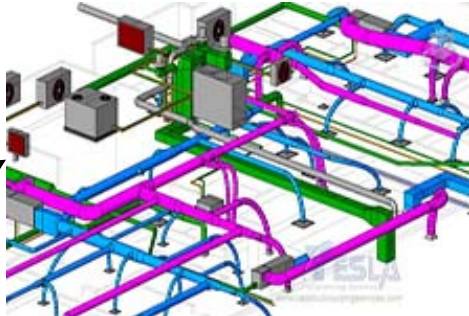
1	2	3	4	5	6	7
Assoc. or Company	Line number and column or description	Parameter	Type of com- ment ²	Comment (justification for change)	Proposed change	Decision on each comment submitted

THE OPEN BIM

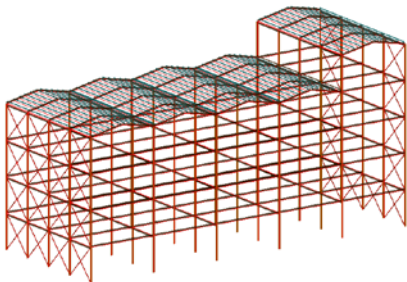
Architect Vectorworks



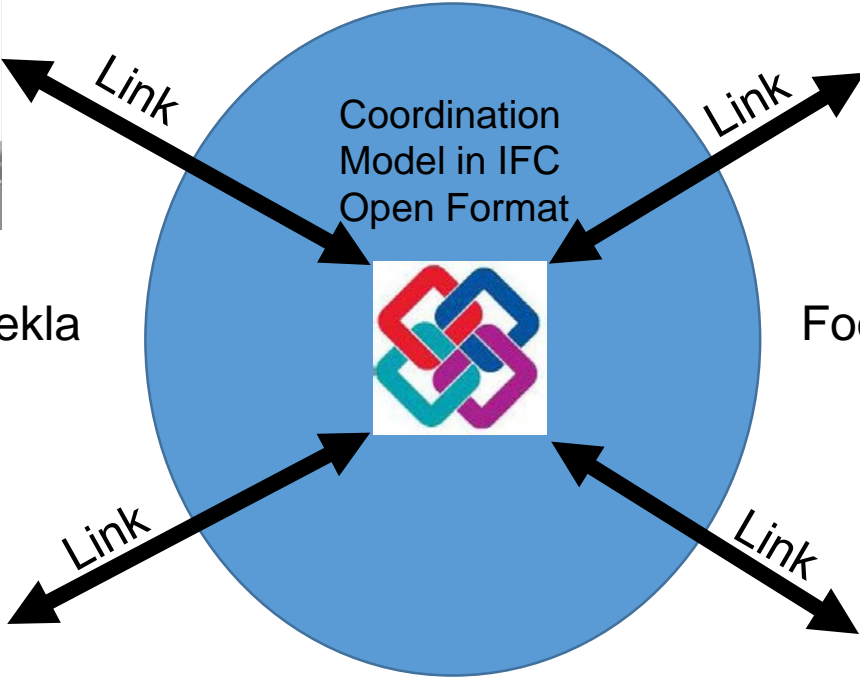
MEP Engineer Revit



Structural Engineer Tekla



Foodservice Consultant Revit



IFC-User Experience



THE OPEN BIM

A	B	C	D	E	F	G
EXPORT ▼	PARAM ▼	REVIT GUID ▼	IFC-Guid ▼	... GUID ▼	English ▼	Español
X	PARAM	a42237e5-5158-439f-944b-b5465a71465b			Default Elevation	Altura referencial
X	PARAM	b9ee93fc-17ba-4f75-a7c7-aa0a1bb06c50			Assembly Code	Código del montaje
	PARAM	cb721baf-229b-4715-a669-00786dd3044ab			Cost	Gastos
X	PARAM	31e85b5d-770f-4ad6-a30f-ad8dfb7aa8e			Description	Descripción
X	PARAM	8833ac3d-1bce-4922-abd6-49c7d9863b3d			Keynote	Punto principal

The idea is to generate
a IFC –Guid and
publish it

Now we will do the practical Part

Family Naming Guidelines QF_

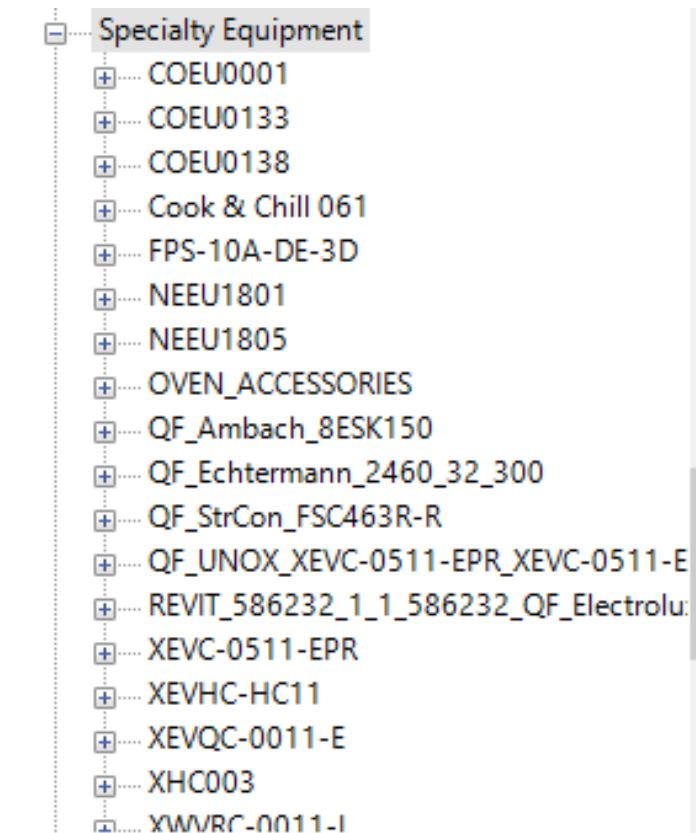
e**Q**uipment **F**oodservice

Revit families of Foodservice Equipment:

- Create unique names for each Family.
- To identify foodservice equipment in the Specialty Equipment Category, all Families are to be identified by the prefix *QF_*.
- The Family name should include the Manufacturer's name and the equipment item model number.

SOURCE FCSI REVIT STANDARDS

Speciality Equipment



How to get BIM Models:



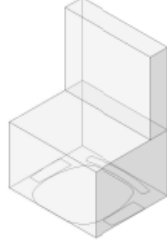


- **Factory consultant supports links**
- **Specialized providers**
- **Industry association repository's**
- **General Repository's**

20

LOD 100

In many European Country's there is a need to create a neutral tender without any references of Brands

LEVEL of DEVELOPMENT

LOD 100	LOD 200	LOD 300	LOD 400	LOD 500
				
Concept (Presentation)	Design Development	Documentation	Construction	Facilities Management
DESCRIPTION: Office Chair Arms, Wheels WIDTH: 700 DEPTH: 450 HEIGHT: 1100 MANUFACTURER: Herman Miller, Inc. MODEL: Mirra LOD: 100	DESCRIPTION: Office Chair Arms, Wheels WIDTH: 700 DEPTH: 450 HEIGHT: 1100 MANUFACTURER: Herman Miller, Inc. MODEL: Mirra LOD: 200	DESCRIPTION: Office Chair Arms, Wheels WIDTH: 700 DEPTH: 450 HEIGHT: 1100 MANUFACTURER: Herman Miller, Inc. MODEL: Mirra LOD: 300	DESCRIPTION: Office Chair Arms, Wheels WIDTH: 685 DEPTH: 430 HEIGHT: 1085 MANUFACTURER: Herman Miller, Inc MODEL: Mirra LOD: 400	DESCRIPTION: Office Chair Arms, Wheels WIDTH: 685 DEPTH: 430 HEIGHT: 1085 MANUFACTURER: Herman Miller, Inc MODEL: Mirra PURCHASE DATE: 01/02/2013

(Only data in red is useable)

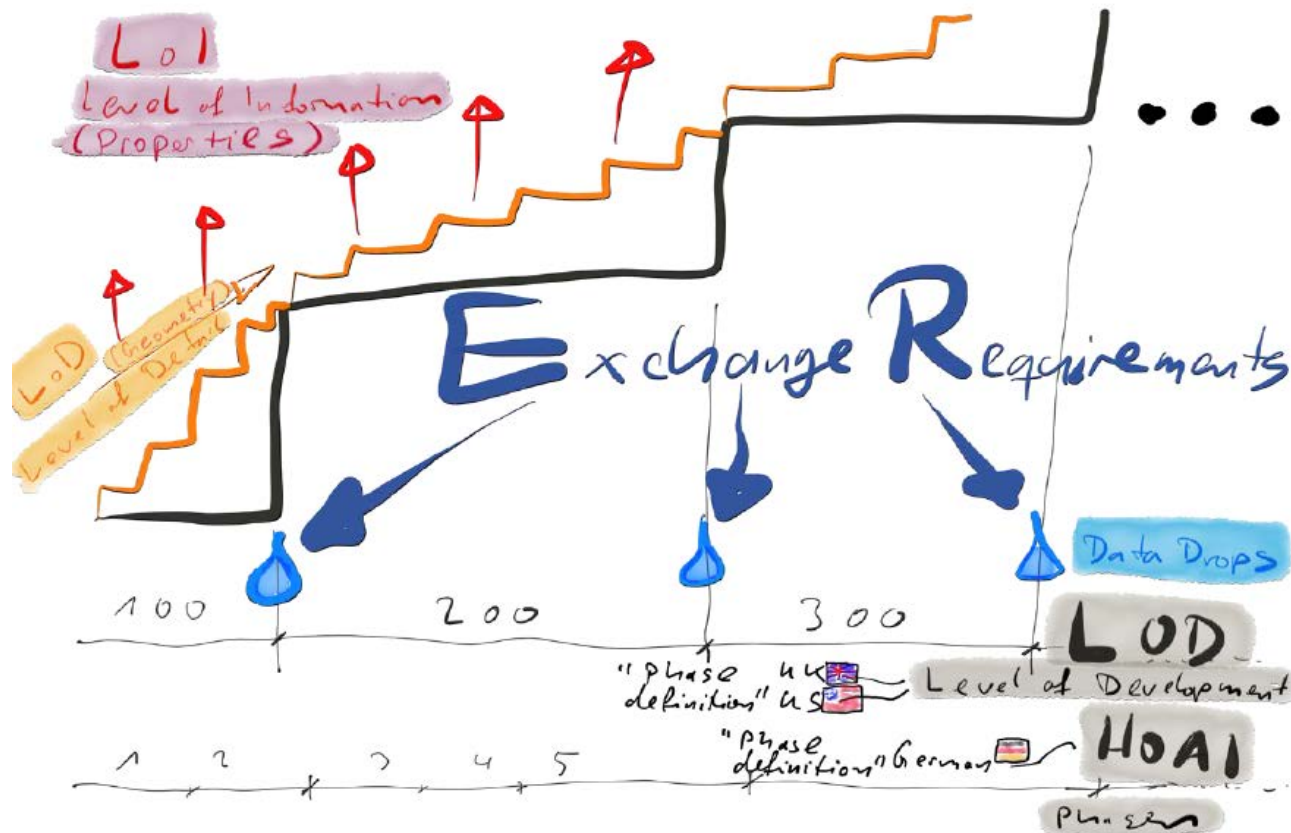
practicalBIM.net © 2013

POWERED BY
Specifi[™]

What means LOD

Level Of Detail

Level Of Graphics + Level Of Information = LOD is growing by steps during the process



RECAP

What is IFSE = International Foodservice Equipment Data Dictionary parameter list

What is GUID = Global Unique Identifier

The importance to speak all the same language and use the same GUID

LOD 100 = Neutral library without Brands or Model Identification to create Public Tenders

Q&A